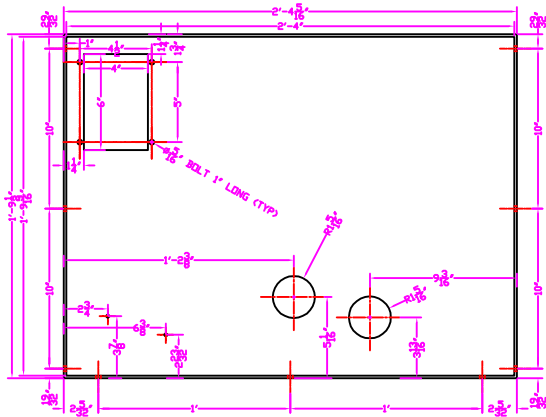
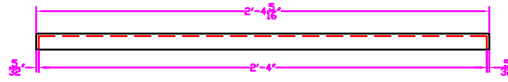


TOP PANEL

FACE DOWN - EDGES UP



SECTION VIEW

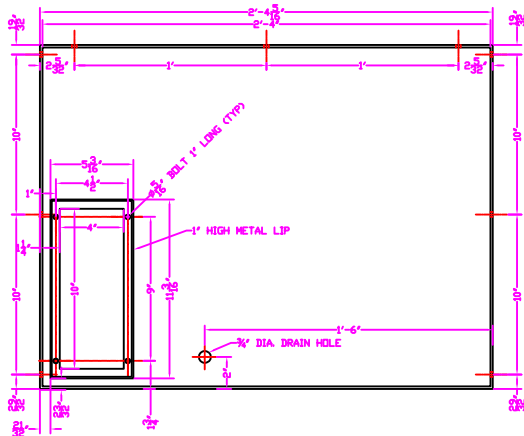


ALL HOLES 5/16" UNLESS SPECIFIED. 3/16" TAPPED INSERTS IN ALL HOLES ON EDGES AND BRACKETS (NOT SUPPORT BAR).

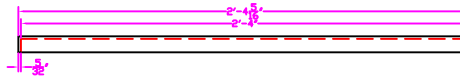
16 GAGE STEEL

BOTTOM PANEL

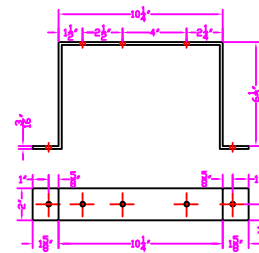
FACE DOWN - EDGES UP



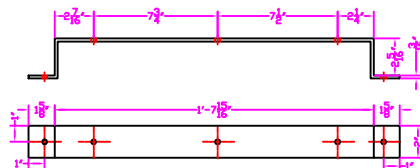
SECTION VIEW



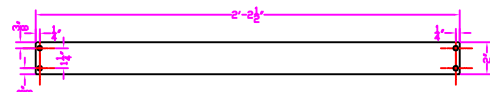
SUPPORT BRACKETS (2)



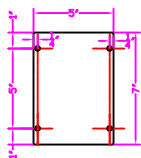
SUPPORT BRACKET



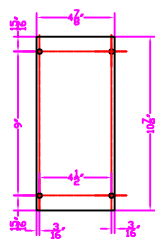
SUPPORT BAR



TOP PLATE



BOTTOM PLATE



SCALE: 1" = 1'